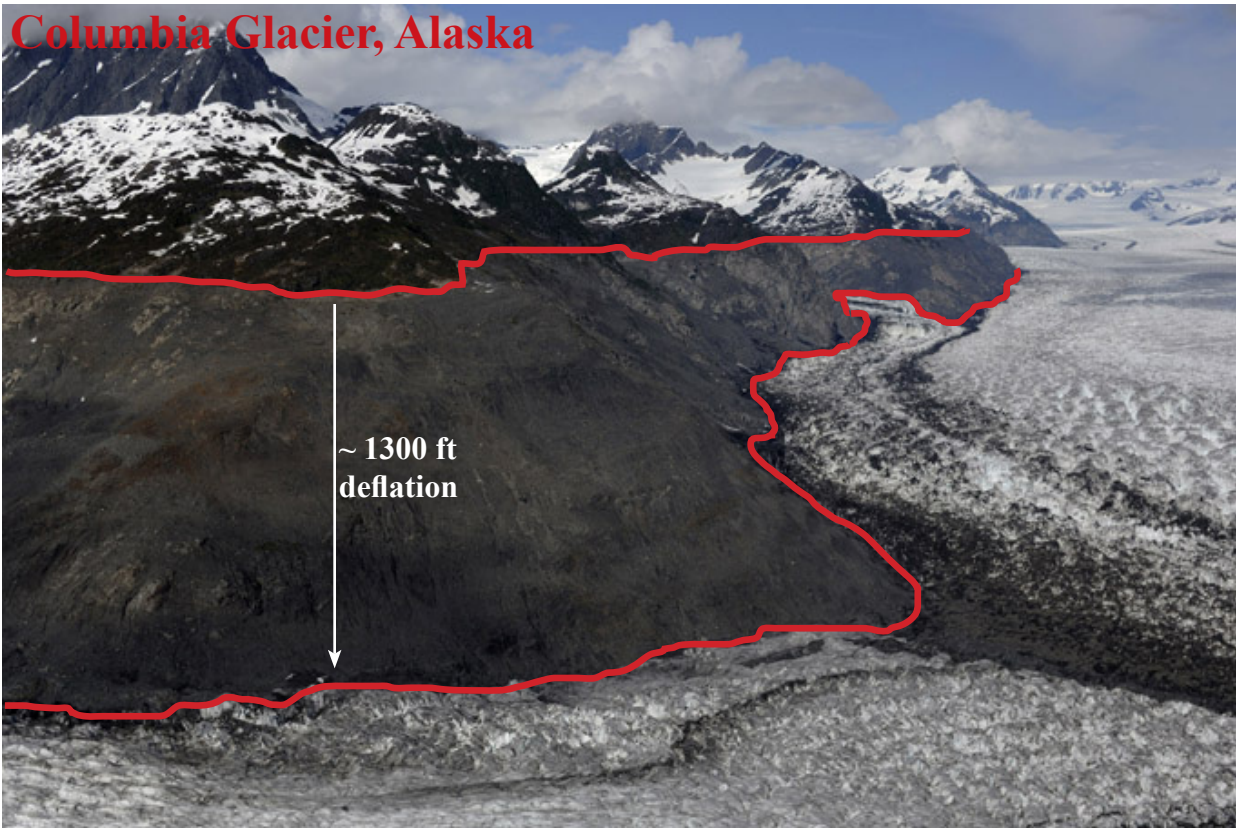


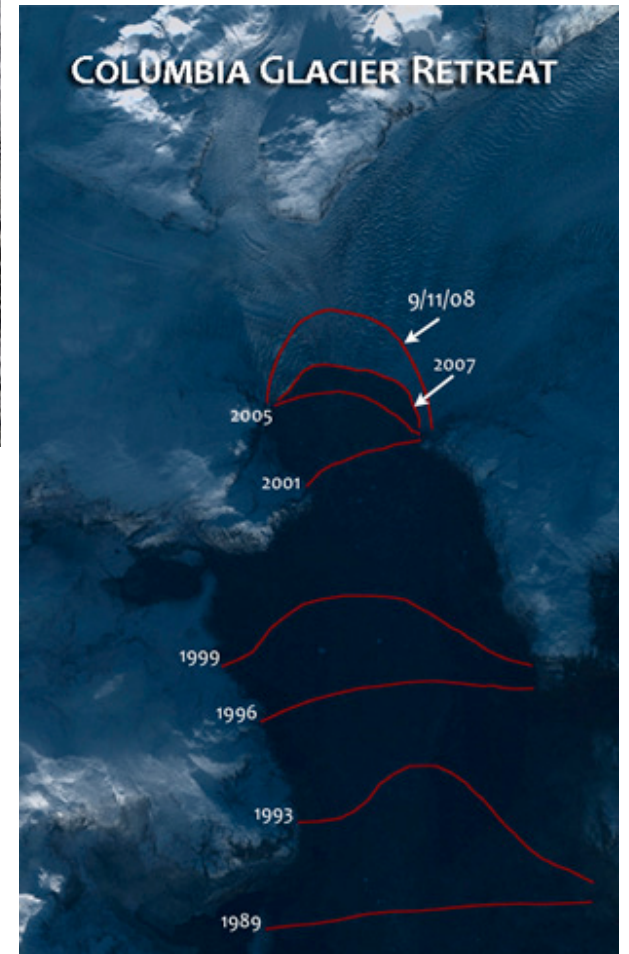
Glacial Ice Retreat Around the World

Columbia Glacier, Alaska

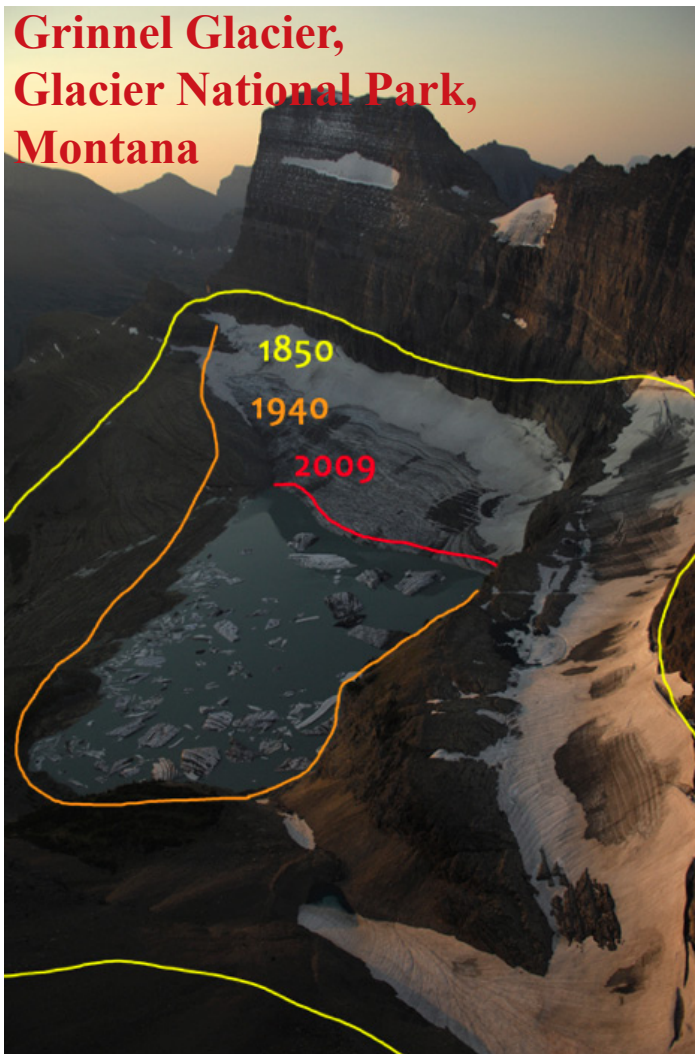


Columbia Glacier - Trim line showing the deflation of the ice mass of the Columbia Glacier since 1984. Greenish snow-covered vegetation is above the trim line and uniform grey rock is below the trim line. In 1984, the glacier was 1300 ft. (400 m.) thicker than it was at the time this picture was made in June, 2006; the height of deflation is equivalent to the height of the Empire State Building.

http://www.extremeicesurvey.org/index.php/_alaska_gallery/



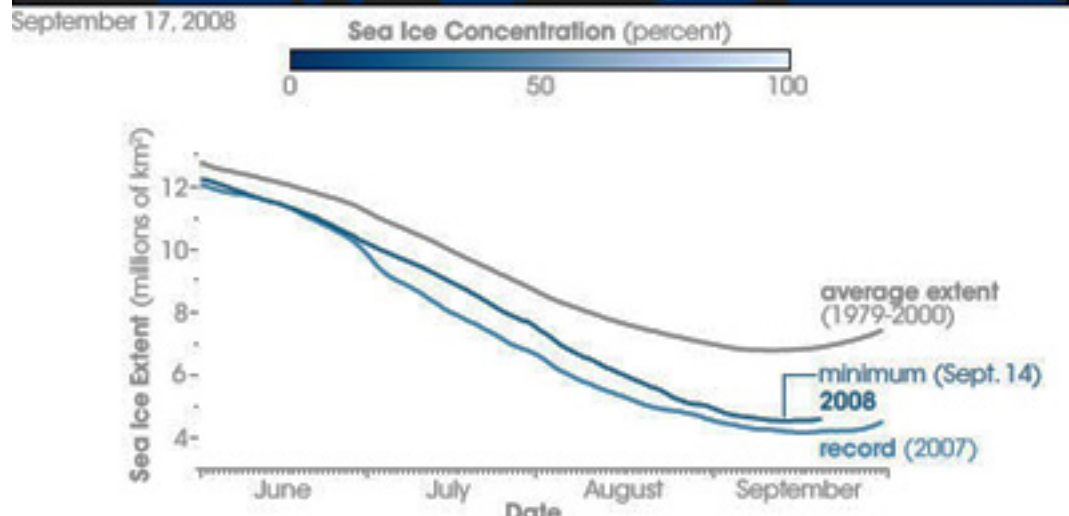
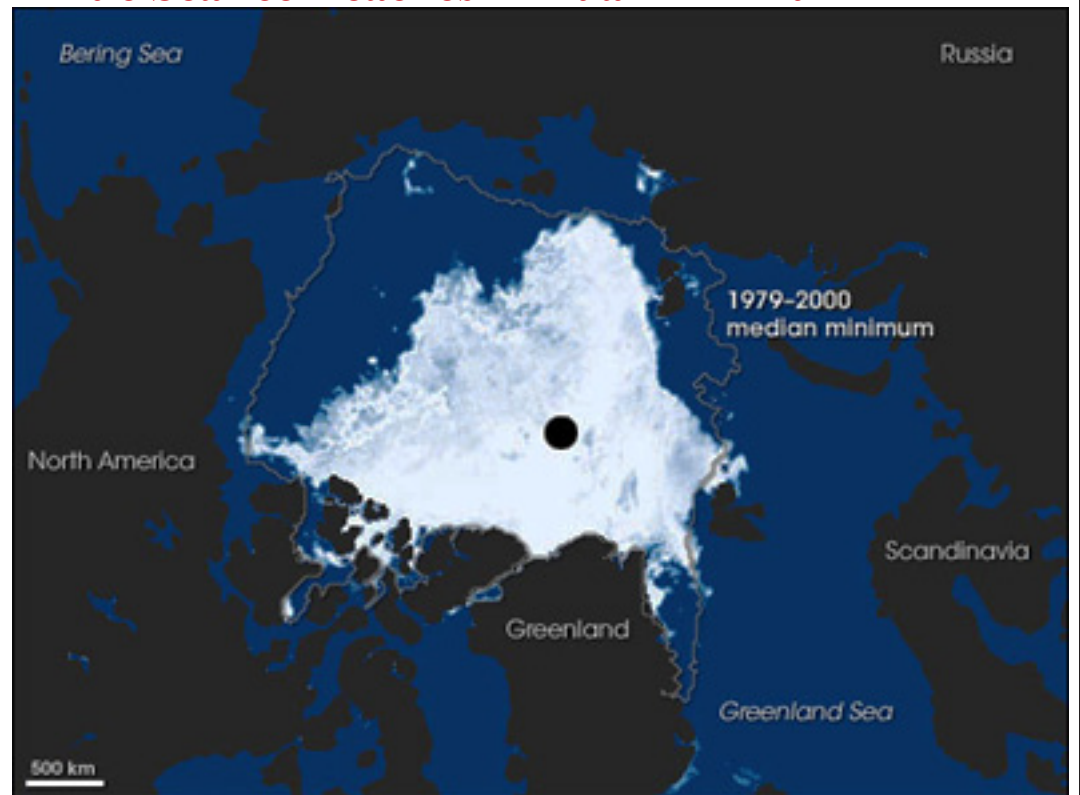
Grinnel Glacier, Glacier National Park, Montana



Grinnel Glacier - This glacier has steadily retreated for over a century. Experts believe that it will continue retreating off the lake's surface until it is little more than a snowdrift hiding in the shadow of Mount Gould.

http://www.extremeicesurvey.org/index.php/_rocky_mountains_gallery/rmgp_4/

Arctic Sea Ice Reaches Annual Minimum



<http://earthobservatory.nasa.gov/IOTD/view.php?id=9115>



Chacaltaya Glacier, Bolivia

Chacaltaya Glacier - Red line = 8/11/2006, Orange line = 8/11/2008. This mountainside was once completely covered by a glacier. Remnants from the 1940s of what was once the world's highest ski lift at 17,000 feet can still be seen on the ice. Experts estimate the glacier will be entirely gone in the next few years.

http://www.extremeicesurvey.org/index.php/_bolivia_gallery/bolivia_5/

All pictures and information were retrieved from the Extreme Ice Survey website : <http://www.extremeicesurvey.org>